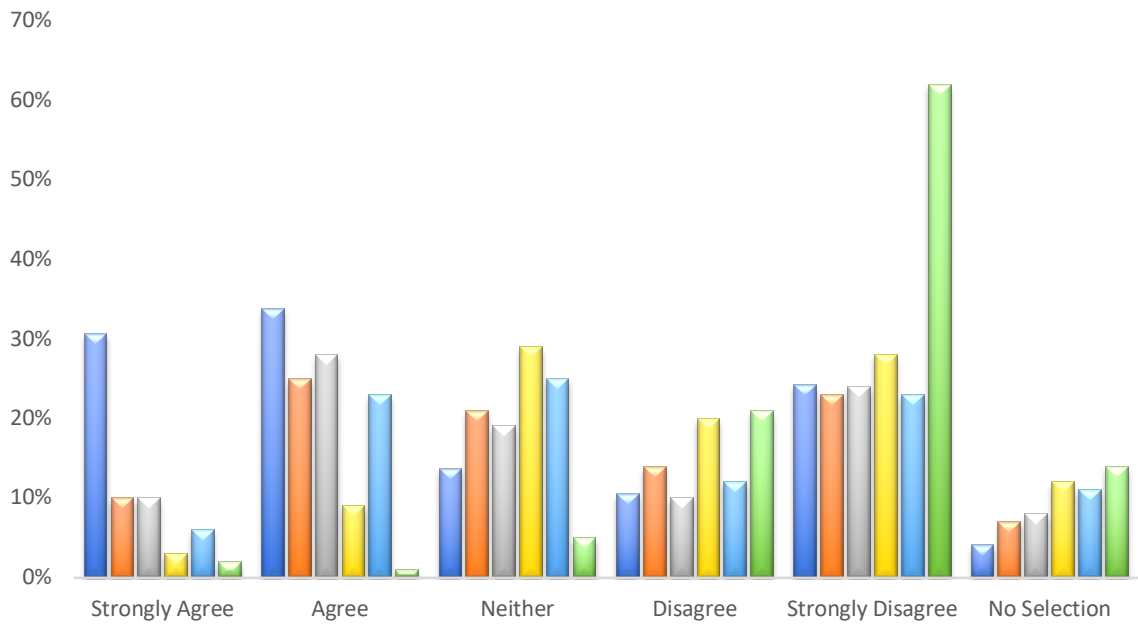


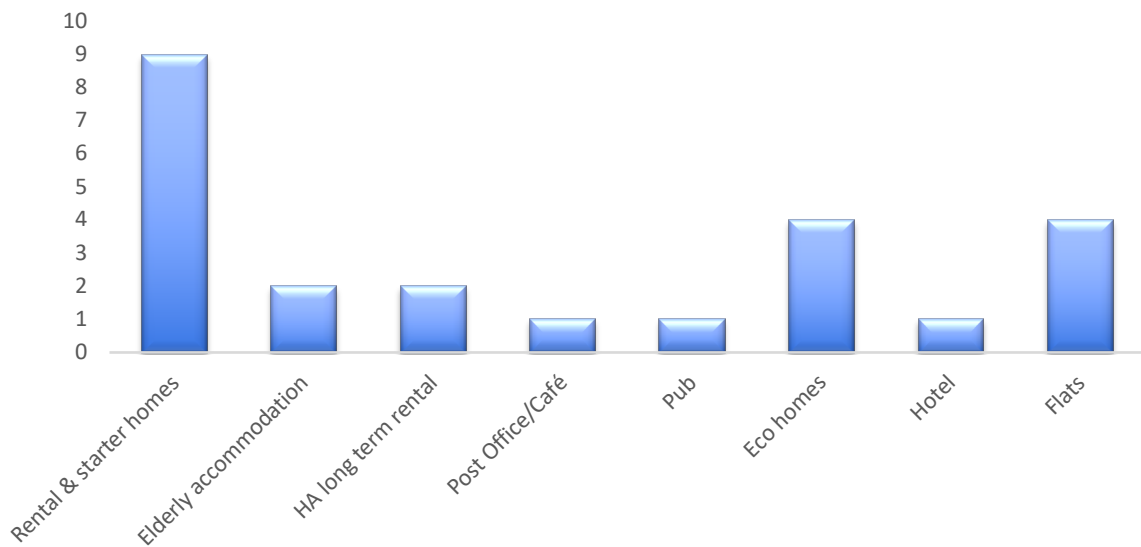
Questionnaires completed 147

Q1 What type of additional housing do you consider is needed in the Parish?

- a. Affordable housing (1 – 2 bed)
- b. Affordable housing (3 – 4 bed)
- c. Small homes (1-2 bed) – open market
- d. Large homes (3-4 bed) – open market
- e. Bungalows
- f. Holiday homes



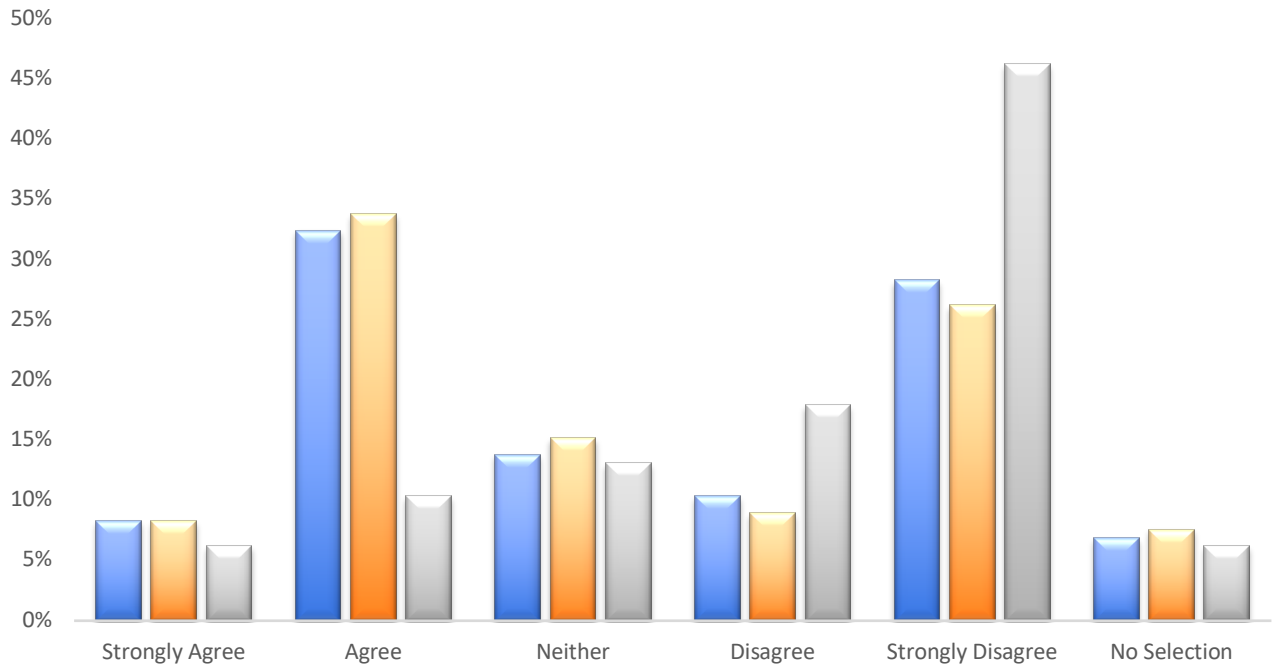
g. Other



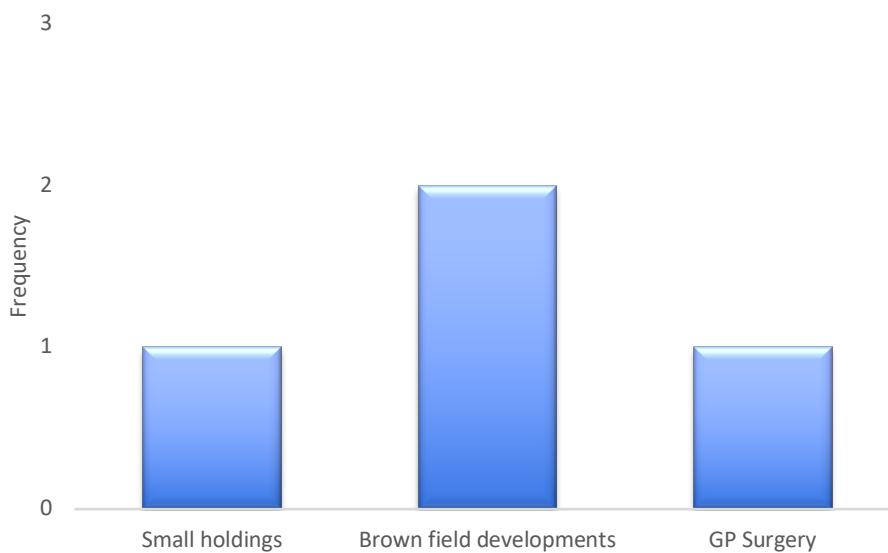
MARHAMCHURCH PARISH NEIGHBOURHOOD PLAN

Q2 What type of additional housing do you consider is needed in the Parish?

- a. Small developments within village boundaries
- b. Roundoff / Infill
- c. Small developments in the surrounding countryside

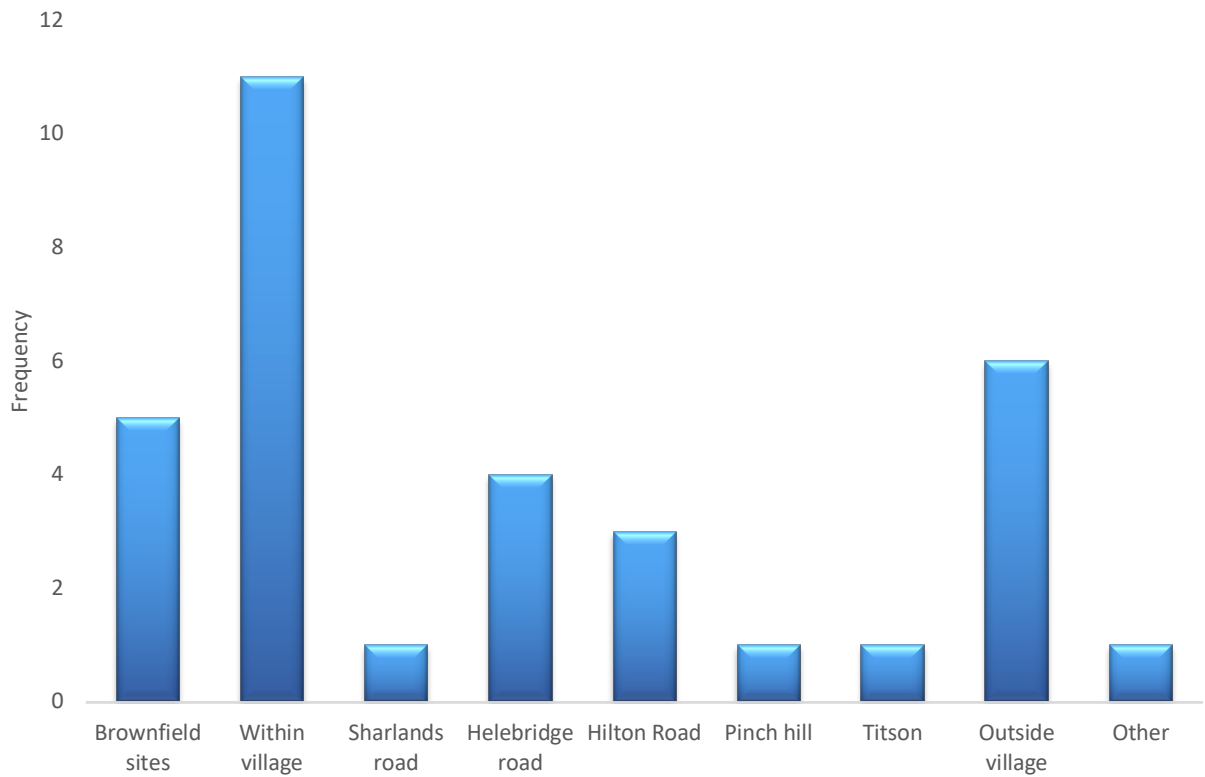


d. other

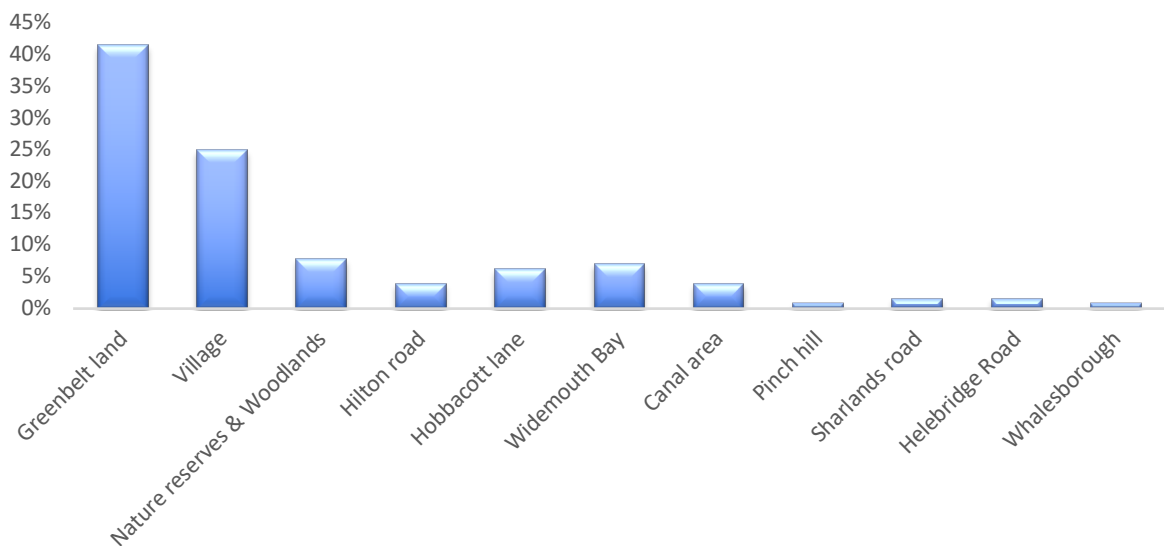


MARHAMCHURCH PARISH NEIGHBOURHOOD PLAN

Q3 If you support small developments where would you want them to be located?



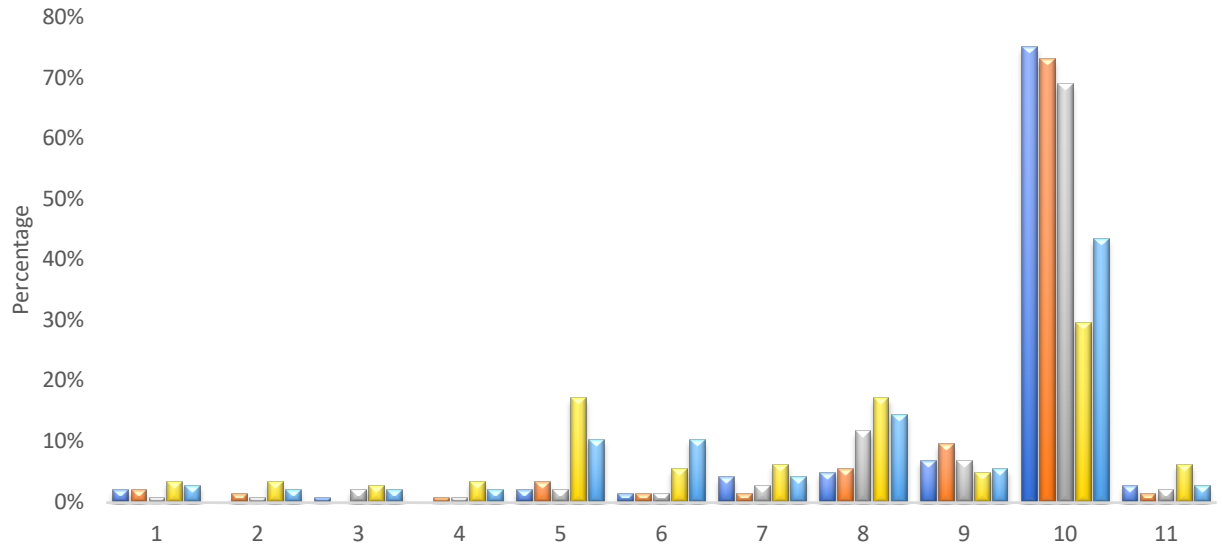
Q4 Which areas should be protected from development?



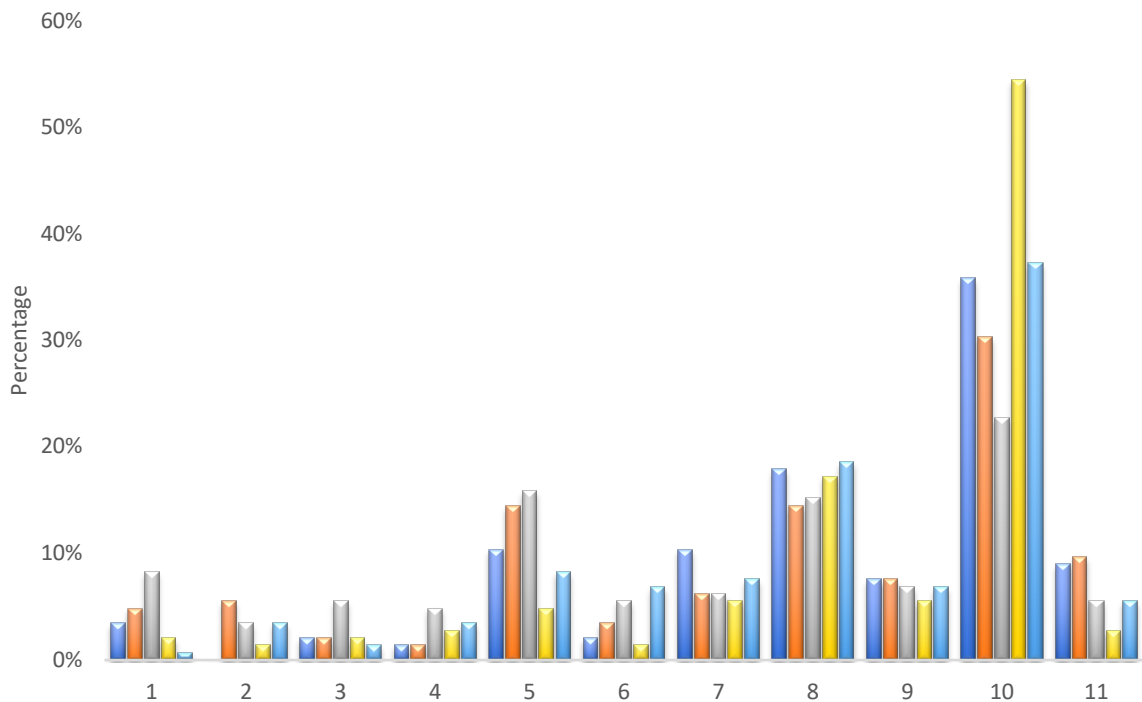
MARHAMCHURCH PARISH NEIGHBOURHOOD PLAN

Q5 How important are the following? 1 being insignificant 10 being highly important. 11 No selection.

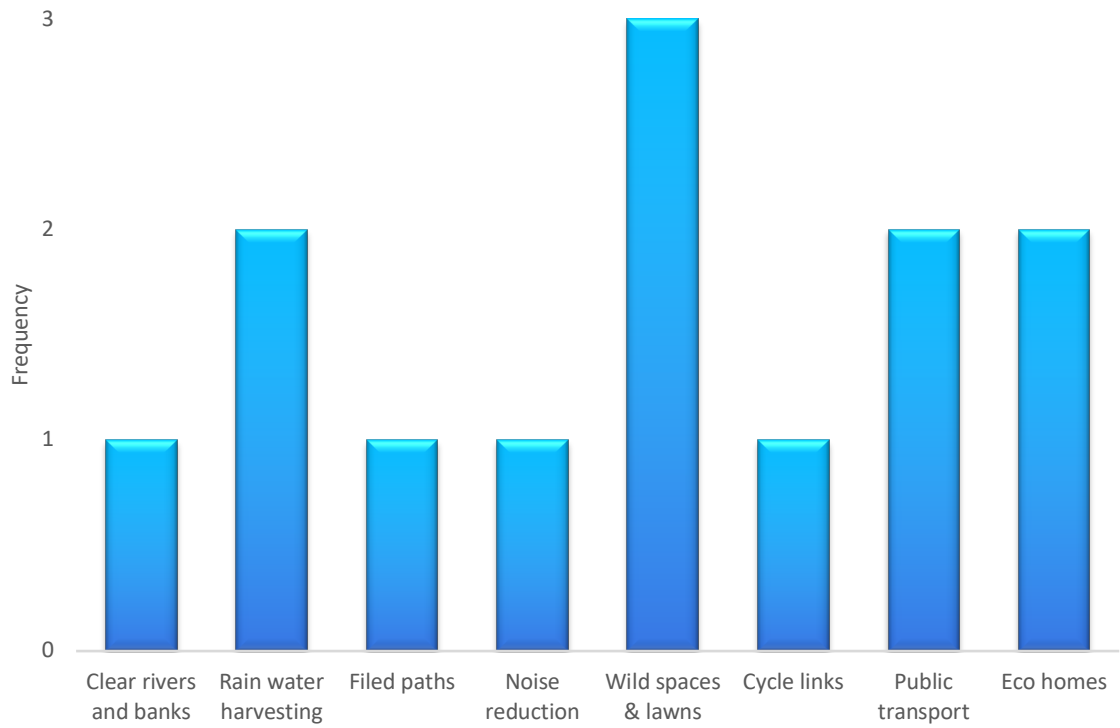
- a. Wildlife
- b. Trees
- c. Hedgerows
- d. Reduced light pollution
- e. Renewable energy



- f. Reduced water run off
- g. Built heritage
- h. Reducing overhead cables
- i. Recycling
- j. Rain collection

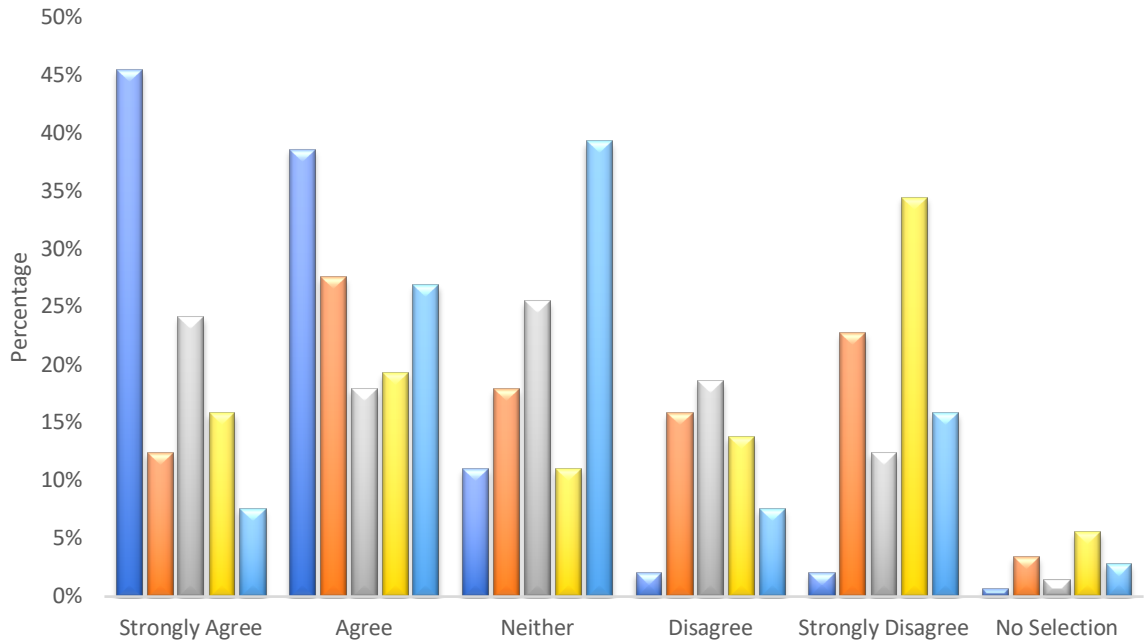


k. Other

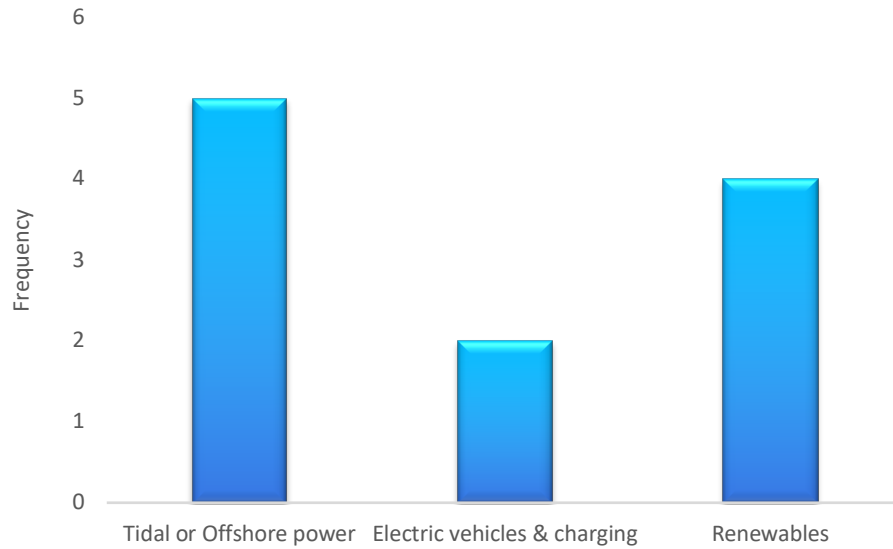


Q6 Do you support the use of the following energy sources?

- a. Domestic solar
- b. Large scale solar
- c. Domestic wind turbine
- d. Large scale wind turbine
- e. Biomass scheme

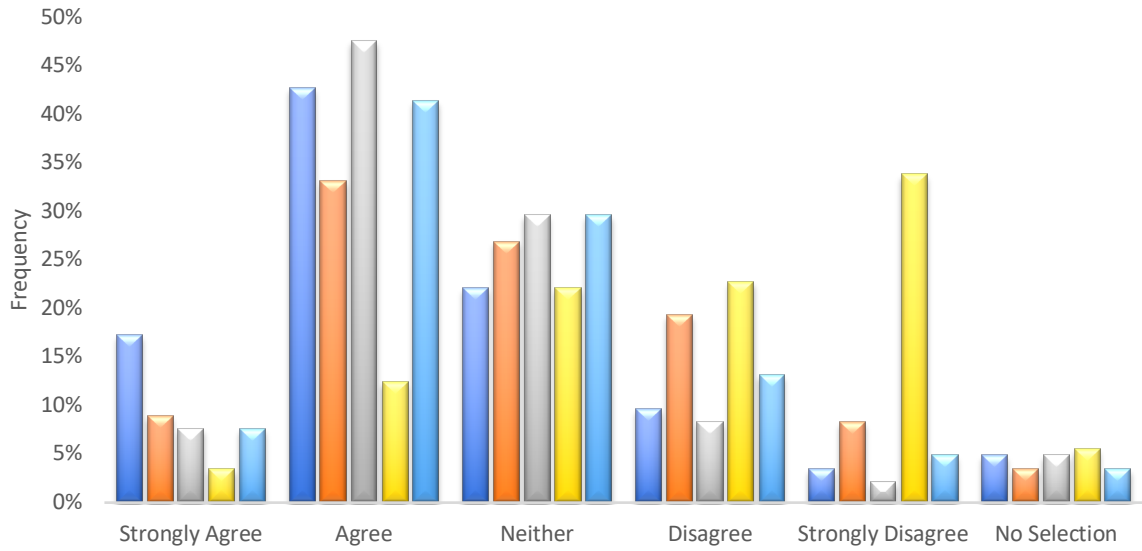


f. Other

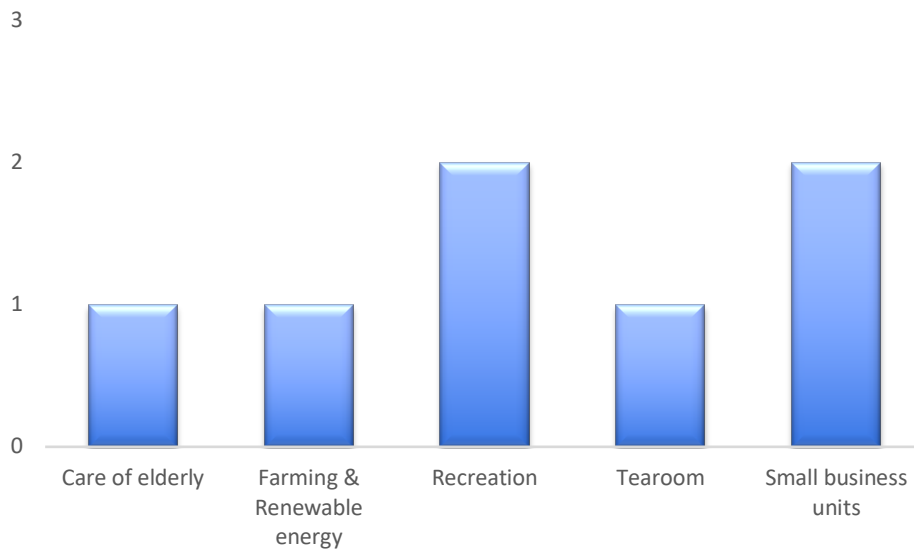


Q7 Do you consider there is a need for employment opportunities within the Parish?

- a. Workshops
- b. Small commercial units
- c. Studios
- d. Holiday cottages
- e. Tea rooms



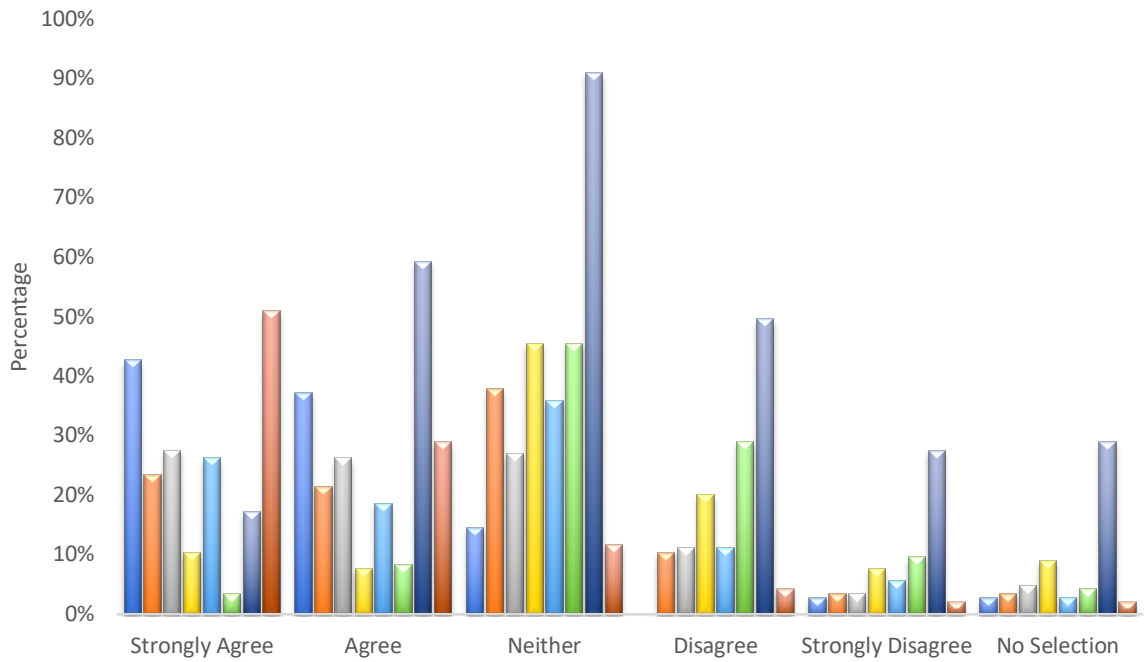
f. Other



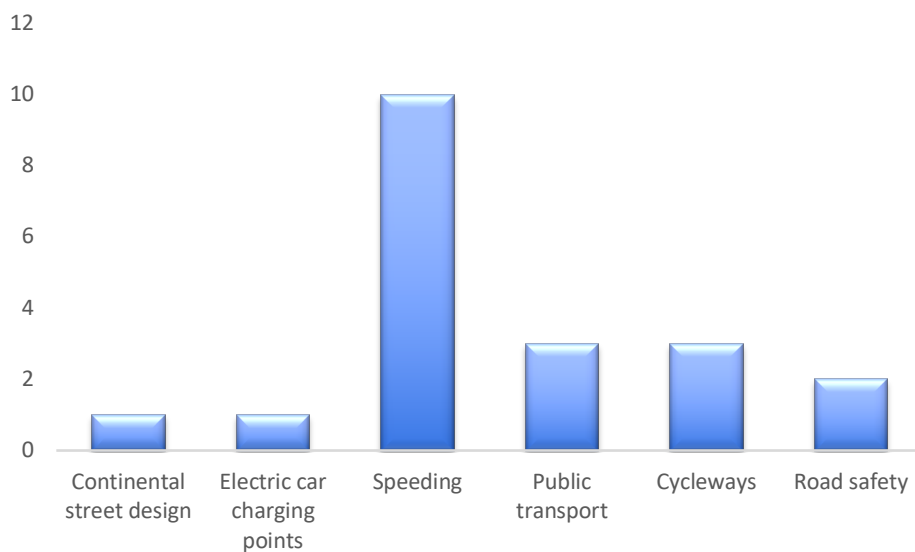
MARHAMCHURCH PARISH NEIGHBOURHOOD PLAN

Q8 What do you consider are the main transport issues within the Parish?

- a. Frequency of local bus service
- b. Lack of additional parking
- c. Unsafe road junctions
- d. Lack of road signs
- e. Lack of pavements
- f. Holiday homes
- g. Lack of cycleways
- h. Speeding



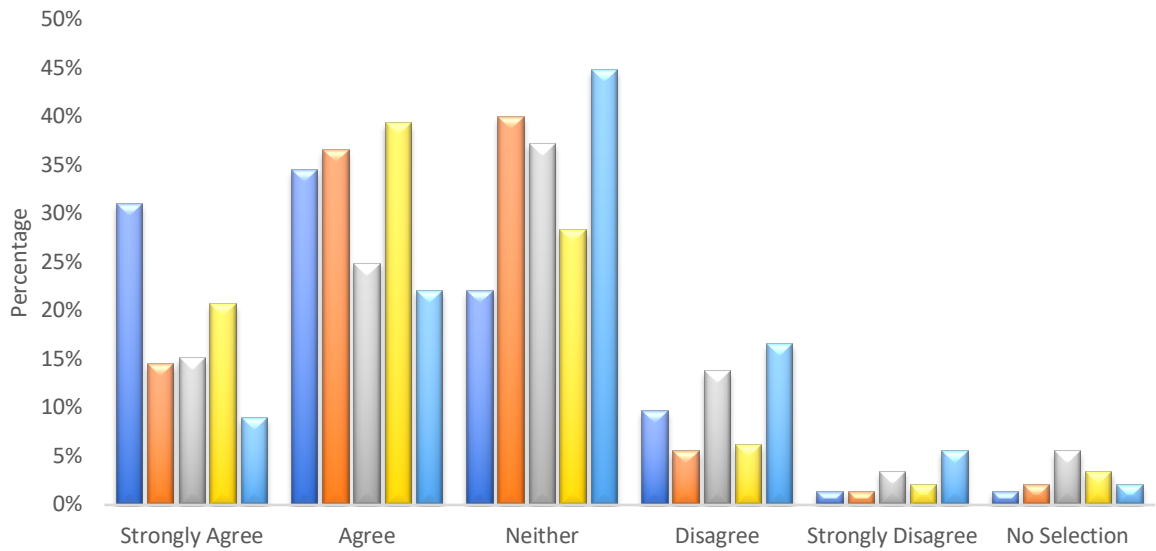
i. other



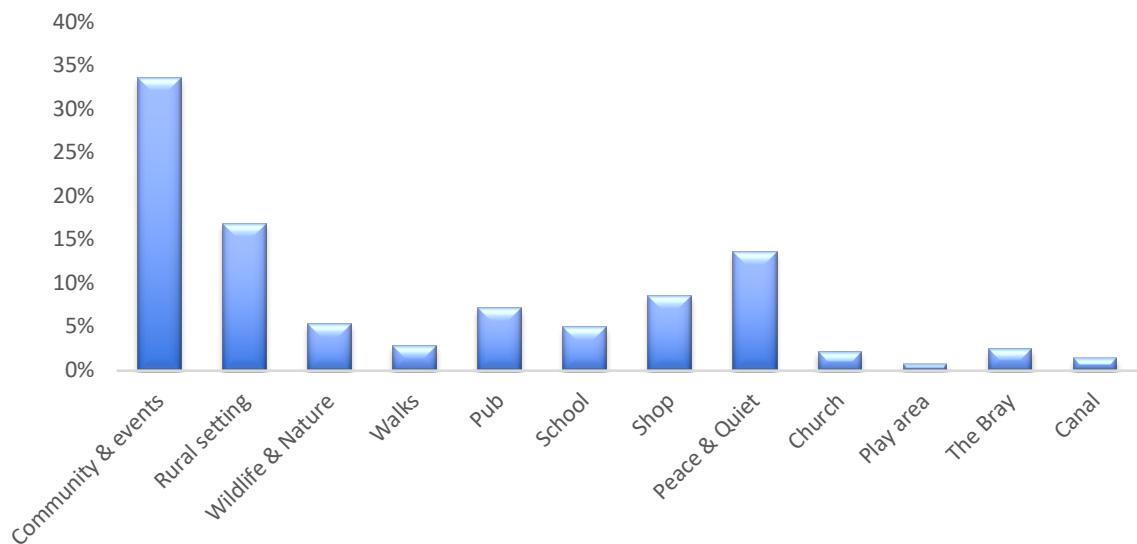
MARHAMCHURCH PARISH NEIGHBOURHOOD PLAN

Q9 Do you agree that the Parish needs additional facilities?

- a. Local footpaths, access to the countryside
- b. Allotments
- c. Children's play area
- d. Facilities for teenagers
- e. Outdoor fitness equipment

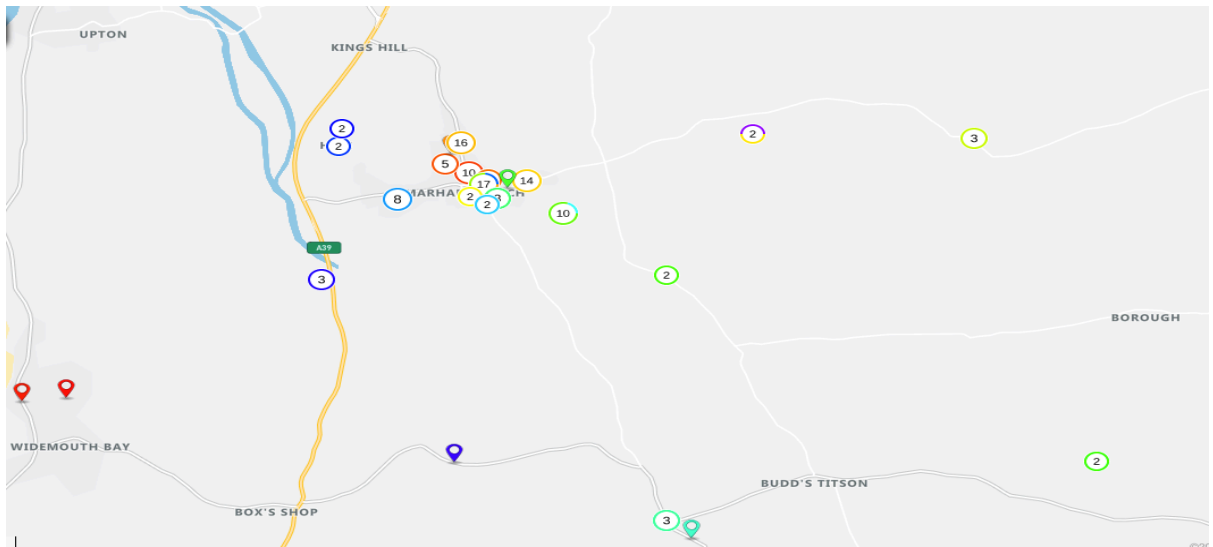


Q10 What do you value most about living in the Parish?



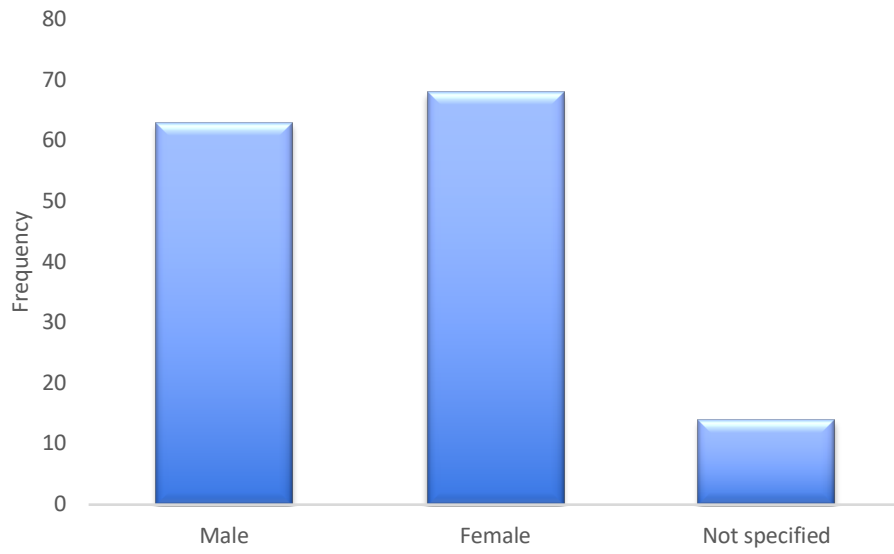
MARHAMCHURCH PARISH NEIGHBOURHOOD PLAN

Postcode not specified 27

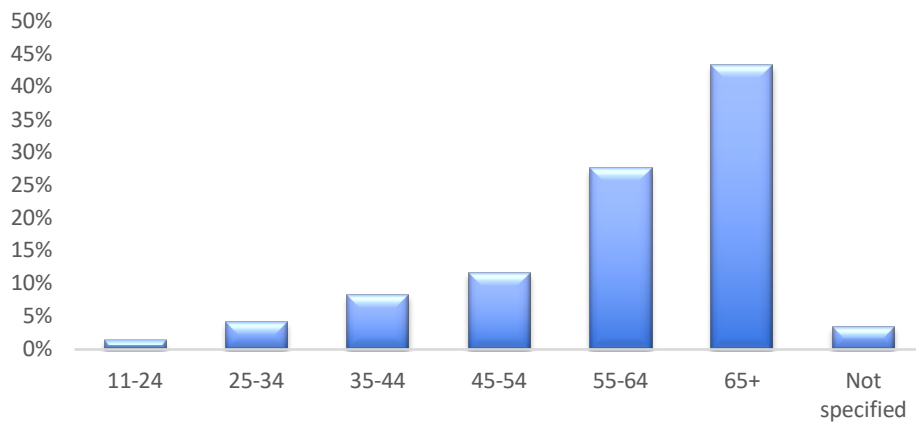


MARHAMCHURCH PARISH NEIGHBOURHOOD PLAN

Gender



Age range



MARHAMCHURCH PARISH NEIGHBOURHOOD PLAN

Q1c Small homes (1-2 bed) – open market. breakdown by age

- a. 11-24
- b. 25-34
- c. 35-44
- d. 45-54
- e. 55-64
- f. 65+
- g. Not specified

